

Red Oak Fire Rescue

Monthly Report



July 2017

OPERATIONAL STATISTICS - FIRE OPERATIONS

FIRE OPERATIONS SUMMARY:

The average total response time for July for fire apparatus was **5:33**. Approximately **17%** of the total call volume represents overlapping calls requiring units to respond to areas outside their base districts, which inevitably results in increased response times. Total Fire & EMS calls for service for the month was **206**. For the month of July, the ratio of EMS incidents to Fire incidents is **65%** to **35%** respectively.

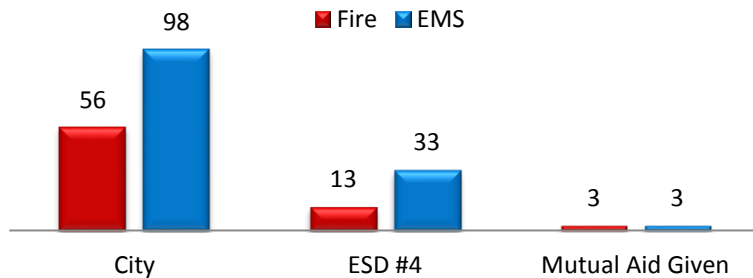
For the month of July, we averaged **2.3** fire calls per day and **4.3** EMS calls per day for an overall daily average of **6.6** calls per day.

Full Response = 3 Engines, 1 Truck, 1 Chief and 1 Ambulance (12-15 people)

Fires that do not require a full response, were manageable by either the initial arriving company, a fire suppression system or the fire was out before arrival.

Call Volume by District

July



Percentage of Total Call Volume by Type:

EMS	65%
Fire	35%

There were 33 overlapping incidents for the month of July. Overlapping incidents create gaps in coverage and greater response times.

OPERATIONAL STATISTICS

KEY PERFORMANCE INDICATORS				PRIOR MONTH	CURRENT MONTH	FREQ	TARGET
ISO Critical Task Completion (Testing - Hose, Hydrants, Ladders & Pumps)				85%	85%	A	100%
Percent of Property Saved vs. Loss—Total Saved: \$29,290				N/A	40%	M	80%
Cardiac Arrest Return of Spontaneous Circulation (ROSC)				N/A	N/A	Q	30%
NFPA 1710 COMPLIANCE MEASURES				PRIOR MONTH	CURRENT MONTH	FREQ	TARGET
	A Shift	B Shift	C Shift				
Average Reaction Time - Station 1	1:37	1:06	2:04	1:25	1:32	M	≤ 80 Seconds
Average Reaction Time - Station 2	1:53	1:11	1:36	1:25	1:36	M	≤ 80 Seconds
Average Response Time - Station 1	4:34	4:59	5:27	5:03	4:57	M	≤ 5:20 Minutes
Average Response Time - Station 2	7:05	6:41	6:50	7:29	6:53	M	≤ 5:20 Minutes
Travel Time (1st Arriving Engine at a Fire Suppression Incident)				5:46	4:24	M	≤ 4 Minutes
Average Full Alarm Assignment Response Time (Staffing 15)				N/A	N/A	M	≤ 9:20 Minutes
Average EMS Emergency Response Time (Turn-out/travel)				5:16	5:33	M	≤ 5 Minutes
AMR Turn-out Time				1:43	1:44	M	≤ 60 Seconds
Travel Time (1st Arriving piece of ALS equipment)				5:09	3:49	M	≤ 4 Minutes
Fractile Time at 90% of EMS Responses				9:44	9:32	M	≤ 5 Minutes
Fractile Time at 90% of Fire Responses				9:34	8:49	M	≤ 5:20 Minutes
Fractile Time at 90% of Structure Fire Responses				N/A	4:20	M	≤ 9:20 Minutes

Incident Breakdown - July

False Alarm & False Call		City	ESD#4	Other District	Combined
111	Building fire		2		2
143	Grass fire	1	1		2
251	Excessive heat, scorch burns with no ignition	1			1
320	Emergency medical service, other	3			3
321	EMS call, excluding vehicle accident with injury	98	33	3	134
322	Motor vehicle accident with injuries	5	1		6
324	Motor vehicle accident with no injuries	10	1		11
444	Power line down	2	1		3
445	Arcing, shorted electrical equipment	2	1		3
510	Person in distress, other	1			1
511	Lock-out	4			4
553	Public service	3			3
554	Assist invalid	5			5
571	Cover assignment, standby, move up			1	1
600	Good intent call	1			1
611	Dispatched & cancelled en route	4	2	2	8
622	No incident found on arrival at dispatch address		1		1
650	Steam, other gas mistaken for smoke, other	2			2
700	False alarm or false call, other	5	1		6
736	CO detector activation due to malfunction	1			1
745	Alarm system activation, no fire – unintentional	4	1		5
746	Carbon monoxide detector activation, no CO	1			1
814	Lightning strike (no fire)		1		1
815	Severe weather or natural disaster standby	1			1

July TOTALS

154

46

6

206

Fire Property Conservation Ratio

Date	Shift	District	Inc #	Full Alarm (working fire)	Scene Staffing	Description	Dollar Loss	Dollar Saved
07.04.17	B	2	17-1336	No	7	Single family mobile home	\$15,000	\$26,790
07.11.17	A	2	17-1386	No	6	Storage building	\$8,500	\$2,500

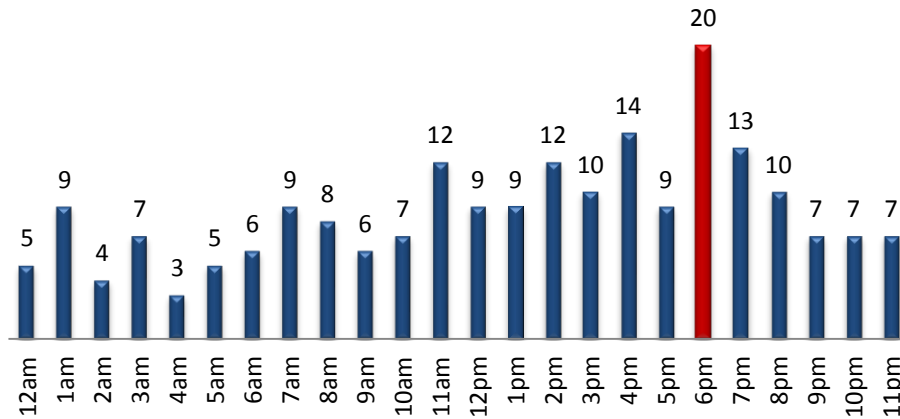
County

Total Value of Property – County	\$52,790
Total Value of Contents – County	\$6,000
Total Property/Contents Loss – County	\$23,500
Total Property Saved – County	\$29,290

OPERATIONAL STATISTICS - FIRE OPERATIONS

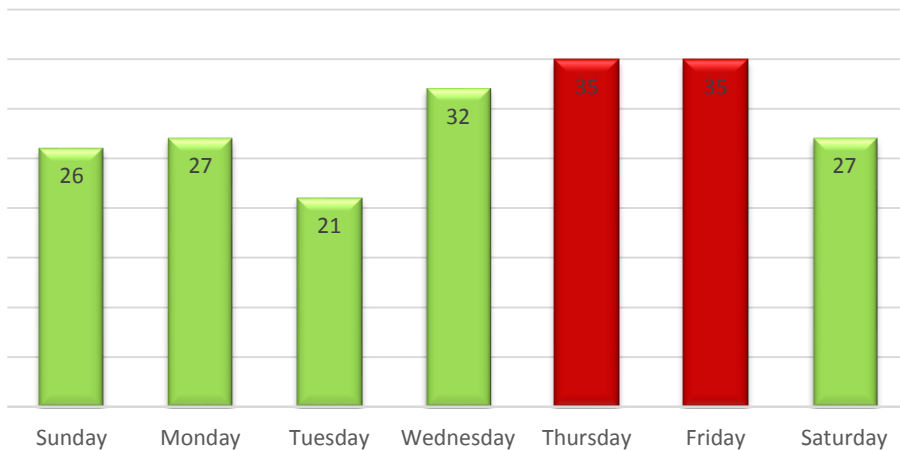
Call Volume by Hour of Day

July



Call Volume by Day of the Week

July



Mutual Aid By Department

We gave 1 Mutual Aid Responses in July to Ferris.

We received 3 Mutual Aid responses in July from Ferris, Glenn Heights, and Lancaster.

Mutual Aid Given



DEPARTMENT FLEET

Truck	Year Model	Total Mileage	Fuel Expense - July	Total Hours	FY17		Emergency Responses July
					July Maintenance Expense	Year-To-Date Maintenance Expense	
T-181	2013	11,858	\$667.72	1,182	\$1,473.12	\$10,938.26	63

Engine	Year Model	Total Mileage	Fuel Expense - July	Total Hours	FY17		Emergency Responses July
					July Maintenance Expense	Year-To-Date Maintenance Expense	
E-181	2012	41,029	\$92.11	4,342	-	\$12,911.82	22
E-182	2007	117,446	\$377.05	9,391	\$293.58	\$10,811.82	54
E-183	2000	43,636	-	8,274	-	\$1,456.78	-

Brush	Year Model	Total Mileage	Fuel Expense - July	Total Hours	FY17		Emergency Responses July
					July Maintenance Expense	Year-To-Date Maintenance Expense	
B-181	2009	22,532	\$25.90	N/A	-	\$49.00	1
B-182	2004	44,007	\$30.79	6,683	-	\$812.38	1

Rescue	Year Model	Total Mileage	Fuel Expense - July	Total Hours	FY17		Emergency Responses July
					July Maintenance Expense	Year-To-Date Maintenance Expense	
R-182	2006	1,243	-	1,072	-	\$393.50	-

Support Vehicles	Year Model	Total Mileage	Fuel Expense - July	Total Hours	FY17		Emergency Responses July
					July Maintenance Expense	Year-To-Date Maintenance Expense	
C-181	2016	11,817	\$146.86	N/A	-	\$5,148.61	10
C-182	2011	122,355	\$180.41	N/A	\$19.88	\$135.37	1
BC-181	2006	75,639	\$101.91	N/A	-	\$205.41	1

OPERATIONAL STATISTICS

COMMUNITY RISK REDUCTION DIVISION	PRIOR MONTH	CURRENT MONTH	FREQ	TARGET
Fire Casualties—Civilian	0	0	M	0
Fires Confined to Room of Origin	1	0	M	65%
CO Inspections	12	2	M	100%
Fire Inspections/Re-Inspections	54	18	A	267
Hazards Found/Corrected	51/24	2/16	M	100%
Fire Protection Plans Reviewed	7	3	M	100%
Pre-Plans for High Hazard Target Facilities	0	0	Q	100%
High Hazard Fire Inspections Complete	0	5	A	62
Company Tours of High Hazard Target Facilities	0	0	A	90%
Fire Safety Classes/Public Education	31	0	A	40
Public Safety Announcements	1	0	M	12

Cert/Occupancy Generated: **\$150**

Plan Reviews Generated: **\$150**

Foster Home Inspections Generated: **\$0**

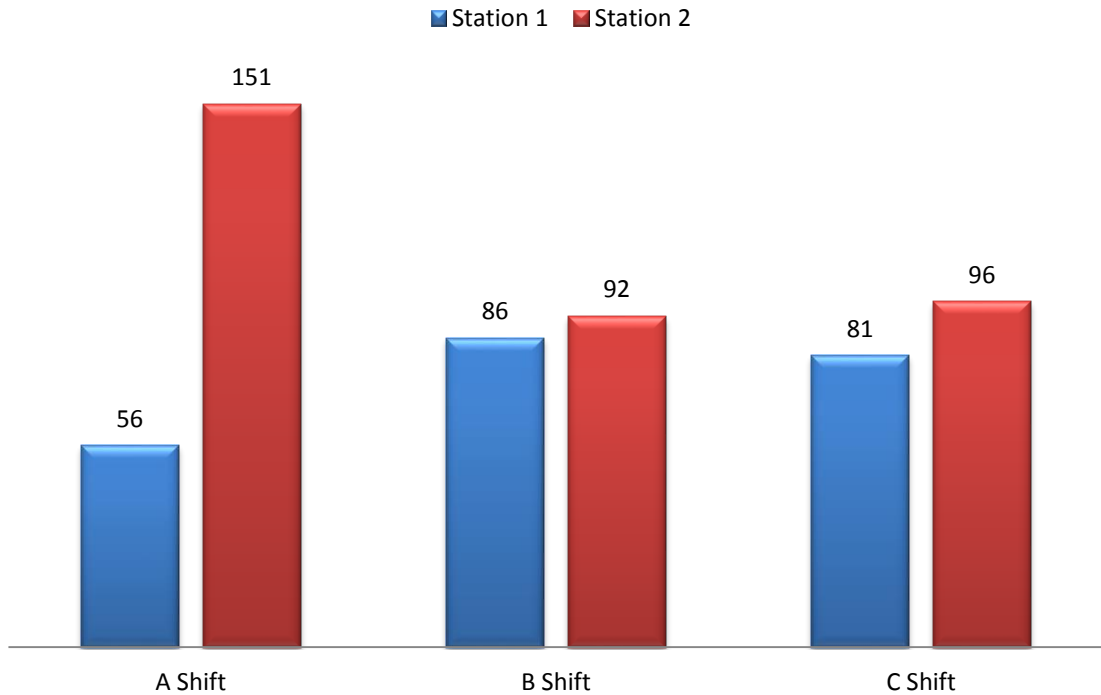
Fire Hydrant Flow Test Generated: **\$0**

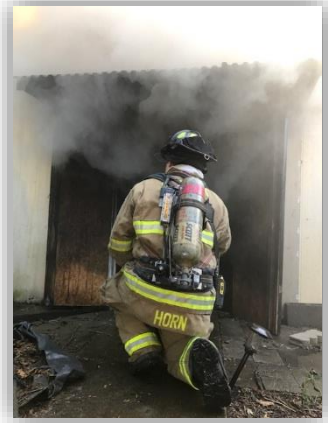
Burn Permits Issued Generated: **\$0**

Total Money Generated: \$300.00

Year to Date, CRRD has generated \$6,375 in inspections, plan reviews and tests.

Fire Training For Operations Division - July





Red Oak Fire Rescue Monthly Report – July 2017